

DISSIDENT

Dissident Ducktail Spoiler Fitting

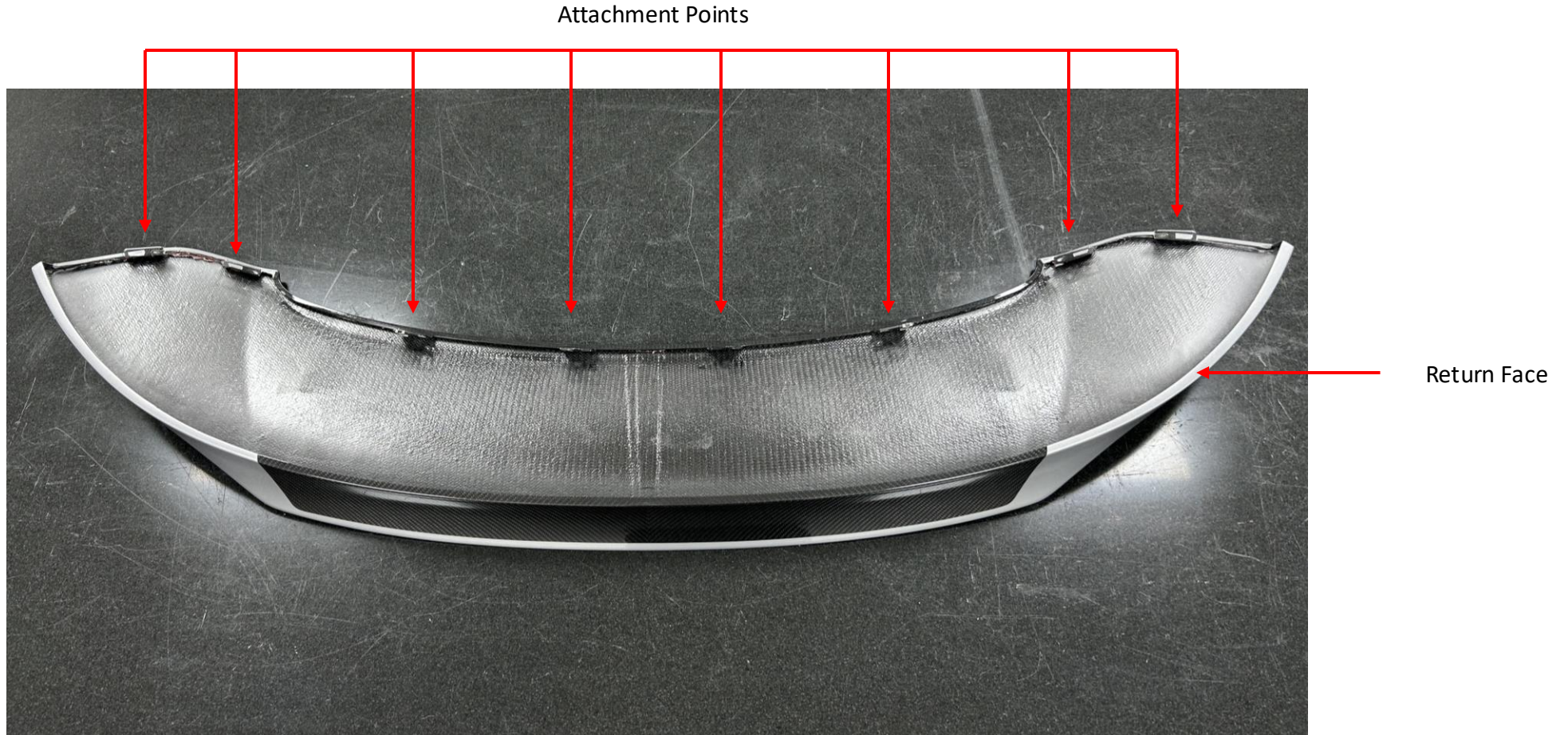
Dissident Ducktail Spoiler Fitting



- This guide illustrates the preferred approach utilised by Dissident Automotive Ltd to fit our carbon fibre Ducktail spoiler

Dissident Ducktail Spoiler Fitting

- The ducktail features 8 attachment points in the leading edge of the underside and a return face that slides over the standard lower plastic moulding (not the original spoiler which must be removed) locking the ducktail into place.



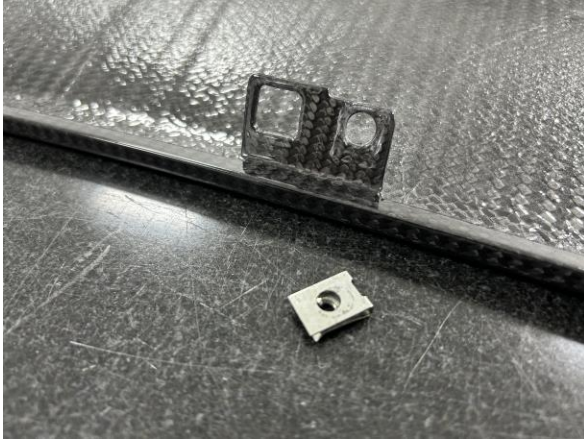
Dissident Ducktail Spoiler Fitting



- The standard spoiler should be raised to the up position which can be done manually from inside the car.
- The 8 attachment / bolt points can be seen along the leading edge. They each have a plastic blanking shield which should be removed to allow access to the bolt beneath.
- The standard attachment bolt is a torx T20.
- Once all 8 bolts are undone, the standard spoiler should be slid backward and then lifted off the car, leaving the underside standard spoiler moulding in place.

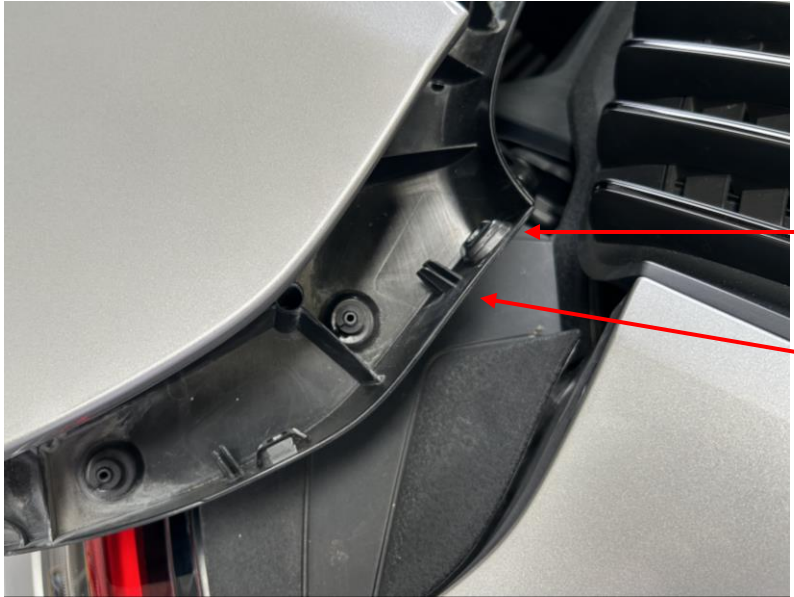


Dissident Ducktail Spoiler Fitting



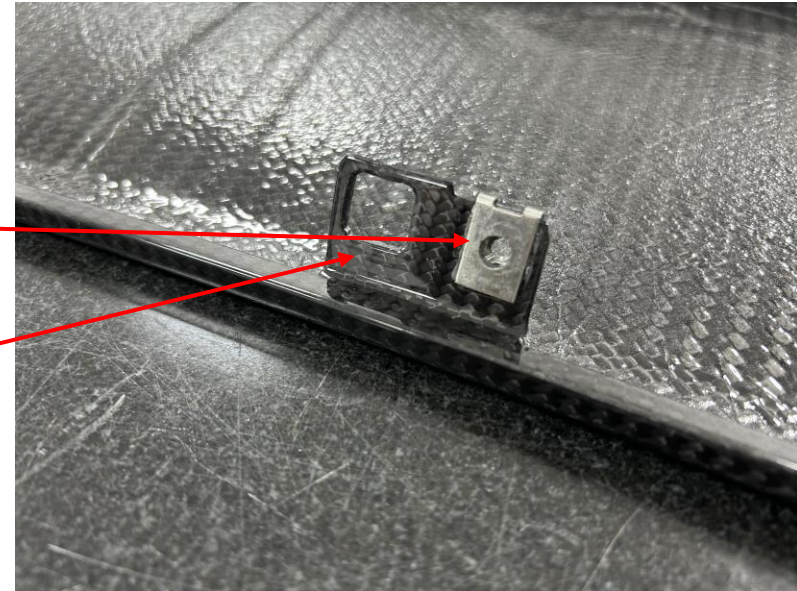
- With the standard spoiler removed the metal clips should be slid off from each of its mounting tabs
- They should then be added to each of the Dissident spoiler mounting tabs being clipped and slid over each of the circular mounting holes as pictured above until all 8 are in place.

Dissident Ducktail Spoiler Fitting



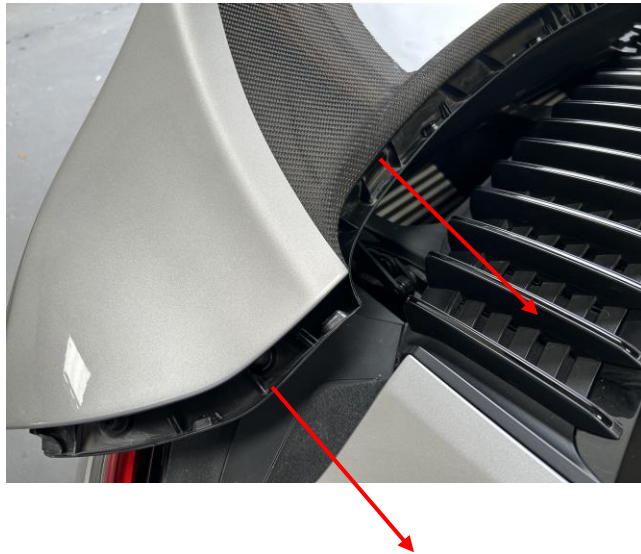
Bolt Hole

Locating Pin



- The ducktail spoiler can now be added to the car. In the lower standard spoiler moulding you can see a male locating pin and a bolt hole at each of the 8 attachment points. The pin should be aligned with the square hole in the mounting tab and the bolt hole with the with the metal clip added to the mounting tab.

Dissident Ducktail Spoiler Fitting



- The ducktail spoiler can now be slid forward onto the mounting points and located
- The ducktail spoiler uses the shape along the lower trailing edge to lock itself into position as per the standard plastic spoiler over the standard plastic lower moulding. The standard lower moulding should slot between the two surfaces shown in the far right picture above when the spoiler is slid forward.
- Re insert and tighten the bolts through each of the eight bolt locations and refit the blanking covers
- This fitment should require no force. If you encounter any resistance check you are sliding over the locating pins correctly and locating correctly into the trailing edge of the spoiler.

Dissident Ducktail Spoiler Fitting



- If needed the Ducktail spoiler can be adjusted laterally and longitude to ensure perfect gap alignment
- The standard Porsche wing base can be adjusted by loosening 6 bolts, 4 from the underside (a cover will need to be removed) and 2 from the top side once the wing cover is removed
- Lightly tighten the top 2 until you can still move the part but with a slight amount of stiction
- Fit the Dissident wing into place and move into position until all gaps are equal.
- Panel height can be adjusted via 3 plastic screws located on the underside in the locations highlighted above
- Remove the wing and tighten all bolts securely

Dissident Ducktail Spoiler Fitting



- Once Properly attached the spoiler can be lowered and is ready for use
- Alignment should be confirmed to the rear quarters. If adjustment is required then loosen all 8 mounting bolts, manipulate the spoiler as required and re-tighten the bolts.
- Ensure secure attachment prior to any use.



Dissident Ducktail Technical Bulletin

Operating features specific to Cabriolet and Targa models:

Operation of the roof mechanism should only be made while the spoiler is in parked/low speed/standard position ie. lowered/closed in the retracted position. Forced lifting of the wing to the up/open/extended position either via manually activating 'extend spoiler' or programming the spoiler via the customized mode switch to be extended when parked, or at low speeds, when by default it would be normally closed will leave the spoiler in the upward position and the roof mechanism should not be operated whilst the ducktail is fitted.

Always ensure the spoiler is lowered/retracted before opening or closing the roof.

